

## *At the Mass at Dawn*

### ENTRANCE ANTIPHON

*Lux fulgebit.*

*Cf. Is 9:1. 5; Lk 1:33*

- i -

8.

**T**

O-day \* a light will shine up- on us, for the Lord

is born for us ; and he will be called Won-drous God,

Prince of peace, Father of fu-ture a- ges : and his reign

will be with-out end.

143

::

VERSES

*Dominus regnavit. Ps 92: 1*

V 1

145

**T**

HE Lord has reigned, he is clothed with beau-ty ; \*

robed is the Lord and girt a- bout with strength.

*Or :* strength. To- day.

# OFFERTORY

*Deus enim firmavit. Ps 92: 1-2*

[i]

8.

150

**G**

OD \* has es- tablished the world, which shall not

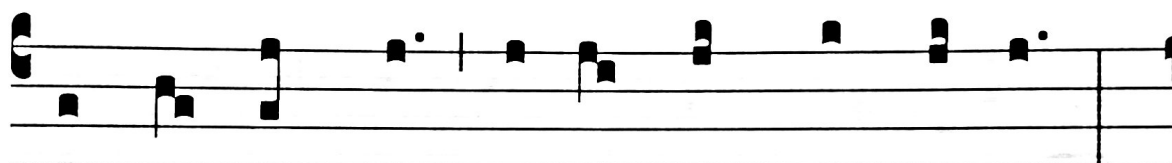
be moved. Your throne, O God, is prepared from

of old. You are from ev- er- last- ing.

VERSES

*Dominus regnavit. Ps 92 : 1*

¶ I



152

**T**

HE Lord has reigned, he is clothed with beau-ty ; \*



robed is the Lord and girt a- bout with strength.

COMMUNION ANTIPHON

*Exsulta, filia Sion. Cf. Zec 9:9*

- i -

4.

**R**

E-joyce, \* O Daughter Si- on; lift up praise,

Daughter Je- ru- sa- lem : Behold, your King will come,

the Ho- ly One and Sav- ior of the world.

V. I

# I

will bless the Lord at all times ; his praise shall be

ev- er in my mouth. \* Let my soul glo-ry in the Lord ; the

low-ly will hear me and be glad.

*Or: glad. settings iii & iv*